

Betriebsanleitung  
 Operating Instructions  
 Instructions de service  
 Istruzioni d'uso  
 Handleiding  
 Instrucciones para el manejo  
 Manual de instruções  
 Naudojimosi instrukcija  
 Kasutusjuhend  
 Lietošanas instrukcija  
 Driftsinstruks  
 Driftsinstruktioner  
 Käyttöohje  
 Driftsvejledning  
 Instrukcja obsługi

Kezelési útmutató  
 Návod k obsluze  
 Navodilo za uporabo  
 Návod na obsluhu  
 Upute za rad  
 Manual de operatii  
 Treoracha Oibriúcháil  
 Οδηγίες χρήσης  
 El Kitabi  
 Инструкции за експлоатация  
 Инструкция по эксплуатации  
 取扱説明書  
 사용설명서  
 使用说明书

VATP 1600

2006/42/EG

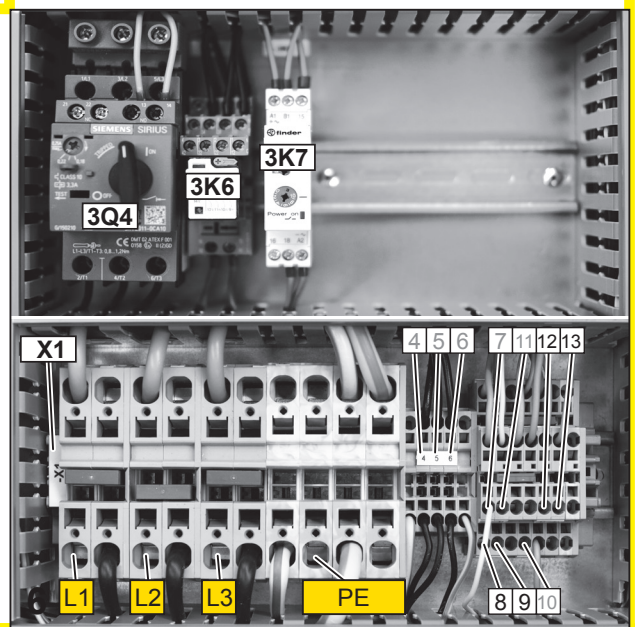
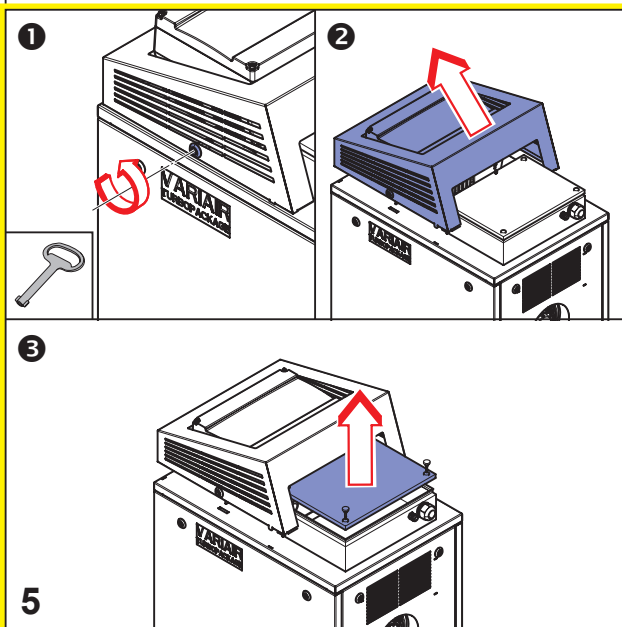
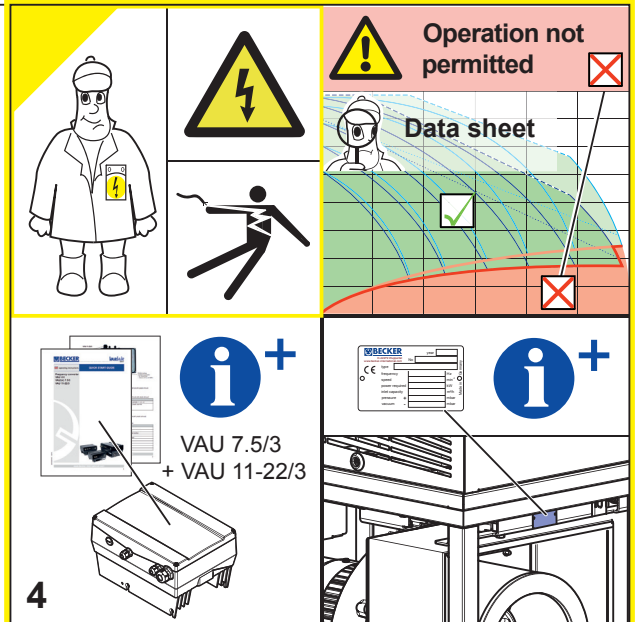
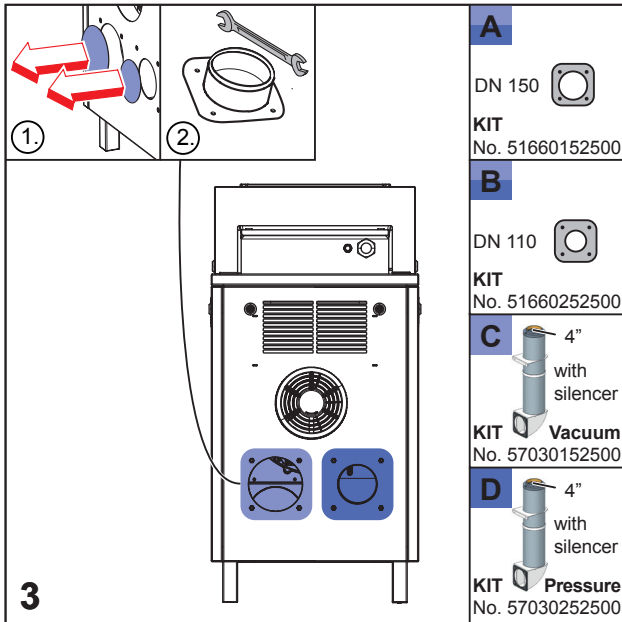


DIN EN ISO 14001:2005

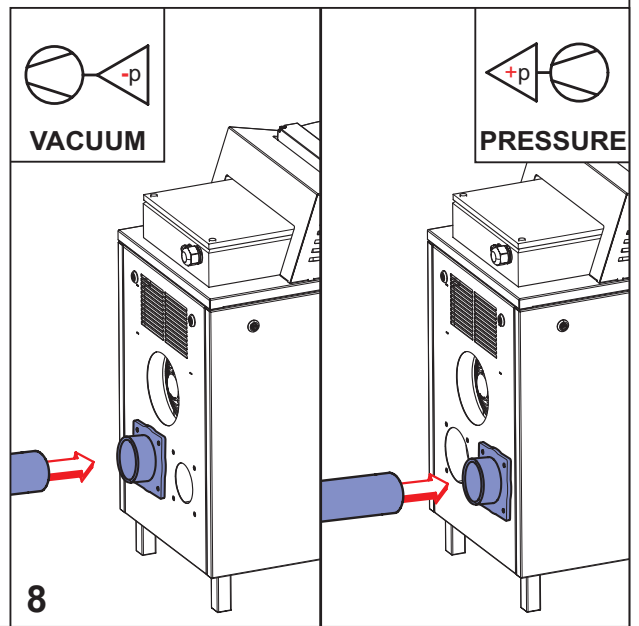
DIN EN ISO 9001  
001929 QM

		<b>MAX. PRESSURE</b> <b>MAX. VACUUM</b>	
			<b>mbar</b>
<p><b>AIR</b></p>		<p><b>MAX.</b></p>	
			<b>m³/h</b>
		DIN EN ISO 3744	<b>PRESSURE</b> $L_{pA} = 64,0 \text{ dB(A)}$
			<b>VACUUM</b> $L_{pA} = 65,0 \text{ dB(A)}$
		<b>162 kg</b> <b>357 lbs</b>	
		<b>A &gt; 170mm</b> <b>A &gt; 7"</b>	

28100352500 02/16



<b>3Q4</b>	Motor circuit breaker
<b>3K6</b>	Contactor - forced cooling fan
<b>3K7</b>	Time delay relay - forced cooling fan
<b>X1</b>	<b>Terminal Description</b>
L1, L2, L3, PE	Main connection with earth
4, 5, 6, 7	Forced cooling fan
8 } Enable jumper	24V (internal)
9 }	Digital input 1 (Enable)
10	24V (internal)
11	Signal ground
12	Analog input 1 (e.g. set-point)
13	Signal ground
<b>7</b>	Enclosed circuit diagrams



<p><b>A</b></p>			<p><b>n=0min<sup>-1</sup></b></p>

<p><b>40 - 200 h</b></p>		<p><b>MIN 1x/a</b></p>
<p><b>AIR ?</b></p>		
<p><b>C.</b></p>		

	<p><b>F1:</b> D: 290 mm H: 200 mm No.: 74000121000</p>	
<p><b>1</b></p>	<p><b>2</b></p>	<p><b>3</b></p>
<p><b>D.</b></p>		

<p><b>min. 2x/a</b></p>		<p><b>EN149 - FFP3</b> 42 CFR 84 - N100</p>
<p><b>AIR ?</b></p>		
<p><b>E.</b></p>		

**EC Declaration of Conformity**  
according to 2006/42/EC (Machinery Directive)



Manufacturer: Gebr. Becker GmbH  
Hölker Feld 29-31  
D-42279 Wuppertal

Documentation manager: Dirk Wallat-Thaler

We hereby declare that the machines of the model series:

**VATP 1600**

conform with all pertinent regulations of the EC Machinery Directive 2006/42/EC and the EMC Guideline 2004/108/EC.

The following harmonised norms were applied:

DIN EN 1012-1/-2: 2011-02/2011-12  
DIN EN ISO 3744: 2011-02

Wuppertal, 29 December 2014

  
Ulrich Wilkesmann  
Managing Director Sales

  
Dr.-Ing. Sven Hilfert  
Managing Director Engineering

- Original Declaration of Conformity  
 Translation of the Declaration of Conformity

GB

**EG-Konformitätserklärung**  
nach 2006/42/EG (Maschinenrichtlinie)



Hersteller: Gebr. Becker GmbH  
Hölker Feld 29-31  
42279 Wuppertal

Dokumentations-bevollmächtigter: Dirk Wallat-Thaler

Hiermit erklären wir, dass die Maschinen der Baureihen:


**VATP 1600**


mit allen einschlägigen Bestimmungen der EG-Maschinenrichtlinie 2006/42/EG und der EMV-Richtlinie 2004/108/EG in Übereinstimmung sind.

Folgende harmonisierte Normen wurden angewendet:

DIN EN 1012-1/-2: 2011-02/2011-12  
DIN EN ISO 3744: 2011-02


Wuppertal, 29. Dezember 2014

  
Ulrich Wilkesmann  
Managing Director Sales

  
Dr.-Ing. Sven Hilfert  
Managing Director Engineering

- Original-Konformitätserklärung  
 Übersetzung der Konformitätserklärung

DE



**www.becker-international.com**



Gebr. Becker GmbH  
Hölker Feld 29-31  
D-42279 Wuppertal  
info@becker-international.com

